



LAMBETH TOGETHER CARE PARTNERSHIP (FORMERLY LAMBETH TOGETHER STRATEGIC BOARD)

Thursday 11 July 2024 | 1:00pm – 5:00pm

Venue: Brixton House, Studio 4, 385 Coldharbour Ln, London SW9 8GL

BOARD MEMBERS	
Dr Dianne Aitken	Lambeth Together Care Partnership Board Co-chair, GP, Neighbourhood and Wellbeing Delivery Alliance Clinical and Care Professional Lead - Southeast London Integrated Care Board
Cllr Jim Dickson	Lambeth Together Care Partnership Board Co-Chair. Cabinet Member for Healthier Communities (job-share), Lambeth Council
Cllr Judith Cavanagh	Young People's Champion, Lambeth Council
Cllr Jacqui Dyer	Cabinet Member for Healthier Communities (job-share), Lambeth Council
Nozomi Akanuma	Living Well Network Alliance Clinical and Care Professional Lead, Psychiatrist South London, and the Maudsley NHS Foundation Trust
Andrew Carter	Corporate Director of Children's Services, Lambeth Council
Fiona Connolly	Corporate Director of Housing and Adult Social Care, Lambeth Council
George Verghese	GP, Co-Chair of the Lambeth Primary Care Clinical Cabinet
Raj Mitra	GP, Children and Young People's Alliance Clinical and Care Professional Lead
Ruth Hutt	Director of Public Health, Lambeth Council
Lilian Latinwo-Olajide	Programme Director, Black Thrive, Lambeth
Richard Wiltshire	Patient and Public Voice Member
Sarah Flanagan	Patient and Public Voice Member
Paul Coles	CEO, Age UK Lambeth
Louise Dark	Guy's and St Thomas' NHS Foundation Trust
Therese Fletcher	Managing Director, Lambeth GP Federation - Southeast London Integrated Care Board
Andrew Eyres	Corporate Director of Integrated Health & Care, Lambeth – Southeast London Integrated Care Board
Julie Lowe	Site Chief Executive, Kings College Hospital NHS Foundation Trust - Southeast London Integrated Care Board
Nathalie Zacharias	Director of Therapies, South London and the Maudsley NHS Foundation Trust - Southeast

	London Integrated Care Board
NON VOTING MEMBERS	
Mairead Healy	Chief Executive, Healthwatch Lambeth
Penelope Jarrett	Chair, Lambeth Local Medical Committee, GP

FURTHER INFORMATION

This meeting will be held in accordance with Paragraph 78 of the Coronavirus Act and Section 13 of the related Regulations which details that members of the public and press be provided access to the meeting through remote means.

If you require any further information or have any queries please contact: Cheryl Smith, lamccg.lbsat@nhs.net

AGENDA

Please note that the agenda ordering may be changed at the meeting.

		Page Nos.
1	Agenda and Introductions	1 - 4
2	Declarations of Interest	
3	Review of the Minutes	5 - 12
4	Lambeth Together Care Partnership - Place Executive Lead Report	13 - 20
5	Living Well Network Alliance - Deep Dive	21 - 46
6	Healthwatch Lambeth	47 - 76
7	Operose Due Diligence	77 - 78
8	Supporting Our Residents - Cost of Living	79 - 92
9	Lambeth Together Assurance	
10	Primary Care Commissioning Committee (PCCC) Update	93 - 108

This page is intentionally left blank

Lambeth Together Care Partnership Public Forum and Board Meeting in Public

Thursday 11 July 2024 | 1:00pm – 5:00pm

Venue: Brixton House, Studio 4, 385 Coldharbour Ln, London SW9 8GL

**This meeting is in person only*

AGENDA

Members of the public are welcome and encouraged to attend the Public Forum and observe the Board Meeting.

Agenda Item No. and Time	Agenda Item Title	Attachment / Supporting Information	Agenda Item Lead
1 p.m.	Public Forum		
60 mins	Welcome and introductions The Public Forum and how to take part Questions from the public		Dr Di Aitken <i>Co-Chair</i>
2 p.m.	Board Meeting in Public		
1.	Introductions <ul style="list-style-type: none"> ▫ Welcome, introductions and apologies 		Dr Di Aitken <i>Co-Chair</i>
2.	Declarations of Interest <ul style="list-style-type: none"> ▫ Members of the Board are asked to declare any interests on items included in this agenda 		Dr Di Aitken <i>Co-Chair</i>
3.	Review of Minutes <ul style="list-style-type: none"> ▫ Members of the Board are asked to approve minutes and review any matters arising from the Lambeth Together Care Partnership Board meeting in Public on 9th May 2024 	Paper enc.	Dr Di Aitken <i>Co-Chair</i>
4. 2:10pm (10 mins)	Lambeth Together Care Partnership - Place Executive Lead Report <ul style="list-style-type: none"> ▫ Members of the Board are asked to receive an update on key developments since the last Lambeth Together Care Partnership Board meeting in Public on 9th May 2024 	Paper enc.	Ruth Hutt <i>Acting Place Executive Lead Lambeth, Corporate Director, Integrated Health, and Care, Lambeth Council and South East London Integrated Care Board</i>
5.	Living Well Network Alliance – Deep Dive	Paper enc.	Lorraine Gordon

Agenda Item No. and Time	Agenda Item Title	Attachment / Supporting Information	Agenda Item Lead
2:20pm (45 mins)	A Focus on Inequalities <ul style="list-style-type: none"> ▫ Members of the Board are asked to note the progress of the Living Well Network Alliance against its Health and Care Plan and the continued focus on tackling inequalities in mental health, using the Patient and Carer Race Equality Framework (PCREF) to drive culture and system change, and note the formal extension of the LWNA's Contract for a further 3 years to 31st March 2028. 		<i>Interim Director, Lambeth Living Well Network Alliance</i> Guy Swindle <i>Deputy Director, Lambeth Living Well Network Alliance</i> David Orekoya <i>Lambeth Associate Director Integrated Commissioning-Mental Health</i> John Manley <i>Clinical Psychologist</i> Tom Barrett <i>Lambeth Programme Director – Cost of Living Crisis</i>
6. 3:05pm (25 mins)	Healthwatch Lambeth <ul style="list-style-type: none"> ▫ Members of the Board are asked to note progress of Healthwatch Lambeth 	Paper enc.	Mairead Healy <i>Chief Executive - Healthwatch</i> Vanita Bhavnani Research and <i>Engagement Manager - Healthwatch</i> Eulalia Gonzalez <i>Project Coordinator - Healthwatch</i> Anna D'Agostino, <i>Engagement Officer - Healthwatch</i>
3:30pm	BREAK (10 mins)		
7. 3:40pm (10 mins)	Operose Due Diligence <ul style="list-style-type: none"> ▫ Members of the Board are asked to review the summary paper, the full due diligence report and the follow-up statement from Operose Health on debt charges 	Paper enc.	Oge Chesa <i>Director of Primary Care and Transformation –</i>
8. 3:50pm (25 mins)	Supporting Our Residents Cost of Living <ul style="list-style-type: none"> ▫ Members of the Board are asked to note and comment on the council programme 	Paper enc.	Tom Barrett <i>Lambeth Council Programme Director, Cost of Living</i>
9.	Lambeth Together Assurance	Paper attached.	Oge Chesa <i>Director of Primary Care and Transformation -</i>

Agenda Item No. and Time	Agenda Item Title	Attachment / Supporting Information	Agenda Item Lead
4.15pm (20 mins)	<ul style="list-style-type: none"> ▫ Members of the Board are asked to note the report from the Lambeth Together Assurance Sub-Group and the associated Integrated Assurance Report presented on 21 May 2024 and endorse the recalibrated Health and Care Plan impact measures proposed for monitoring the Health and Care Plan in the year ahead. 		<i>on behalf of Vacant Board Lay Member</i> Warren Beresford <i>Associate Director Health and Care Planning and Intelligence</i>
10. 4.35pm (10 mins)	Primary Care Commissioning Committee (PCCC) Update <ul style="list-style-type: none"> ▫ Members of the Board are asked to note the update on discussions held and ratify decisions made at the Primary Care Commissioning Committee on 22 May 2024 	Paper enc.	Oge Chesa <i>Director of Primary Care and Transformation - on behalf of Vacant Board Lay Member</i>
11. 4:45pm (10 mins)	Questions from public attendees <ul style="list-style-type: none"> ▫ An opportunity for members of the public to ask further questions 		Dr Di Aitken <i>Co-Chair</i>
12. 4.55pm	AOB Close <i>Date of next meeting: 5th September 2024 (virtual)</i> <ul style="list-style-type: none"> ▫ <i>Public forum, 1pm-2pm</i> ▫ <i>Board meeting in Public, 2pm-5pm</i> 		Dr Di Aitken <i>Co-Chair</i>

This page is intentionally left blank

LAMBETH TOGETHER CARE PARTNERSHIP BOARD MINUTES

Thursday, 9th May 2024, 2pm
via Microsoft Teams

[Part 1 Meeting Recording - Public Forum](#) - (please note, the Public Forum does not have formal minutes taken).

[Part 2 Meeting Recording - Item 1 to 6 \(Inclusive\)](#)

[Part 3 Meeting Recording - Item 7 to 11 \(Inclusive\)](#)

[Board Meeting Papers](#)

[Supplementary Paper - Lambeth Together Assurance Group](#)

Members Present:

Cllr Jim Dickson	Lambeth Together Care Partnership Board Co-Chair. Cabinet Member for Healthier Communities (job-share), Lambeth Council
Dr Di Aitken	Lambeth Together Care Partnership Board Co-Chair. Neighbourhood and Wellbeing Delivery Alliance Clinical and Care Professional Lead
Ruth Hutt	Acting Place Executive Lead Lambeth, Acting Corporate Director, Integrated Health, and Care, Lambeth Council and South East London Integrated Care Board) Director of Public Health, Lambeth Council
Alice Jarvis	Director of Operations and Partnerships, Guy's and St Thomas' NHS Foundation Trust (covering the vacant Board role for Guy's and St Thomas')
Anna Clough	Site Chief Operating Officer, Kings College Hospital NHS Foundation Trust (deputising for Julie Lowe, Site Chief Executive, Kings College Hospital NHS Foundation Trust)
Bimpe Oki	Consultant in Public Health, Lambeth Council (deputising for Ruth Hutt, Director of Public Health, Lambeth Council)
Cllr Jacqui Dyer (present for Public Forum only)	Cabinet Member for Healthier Communities (job-share), Lambeth Council
Cllr Judith Cavanagh	Young People's Champion, Lambeth Council
Dan Stoten	Director of Integrated Children's Commissioning and Youth Services, Lambeth Council (deputising for Andrew Carter, Corporate Director of Children's Services, Lambeth Council)
Dr George Verghese	GP, Co-Chair of the Lambeth Primary Care Clinical Cabinet
Dr Nozomi Akanuma	Living Well Network Alliance Clinical and Care Professional Lead, South London, and the Maudsley NHS Foundation Trust
Dr Raj Mitra	GP, Children and Young People's Alliance Clinical and Care Professional Lead
Mairead Healy	Chief Executive, Healthwatch Lambeth
Paul Coles	Chief Executive, Age UK, Lambeth
Rich Wiltshire	Patient and Public Voice Member
Richard Sparkes	Deputy Director of Social Care, Lambeth Council (deputising for Fiona Connolly, Corporate Director of Housing and Adult Social Care, Lambeth Council)
Sarah B Flanagan	Patient and Public Voice Member
Therese Fletcher	Managing Director Lambeth GP Federation

Apologies:

Andrew Carter	Corporate Director of Children's Services, Lambeth Council
Andrew Eyres	Place Executive Lead Lambeth, Corporate Director, Integrated Health, and Care, Lambeth Council and South East London Integrated Care Board
Dr Penelope Jarrett	Chair, Lambeth Local Medical Committee
Fiona Connolly	Corporate Director of Housing and Adult Social Care, Lambeth Council

Julie Lowe	Site Chief Executive, Kings College Hospital NHS Foundation Trust
Lilian Latinwo-Olajide	Programme Director, Black Thrive, Lambeth
Nathalie Zacharias	Director of Therapies, South London, and Maudsley NHS Foundation Trust attended

In Attendance:

Alex Jackson	Lambeth Together Programme Lead
Edward Odoi	Associate Director of Finance, Lambeth, Southeast London Integrated Care Board
Gladys Lawson	Pathology, Guy's and St Thomas' NHS Foundation Trust
Guy Swindle	Deputy Director, Living Well Network Alliance
Helen Bolger	Lead Commissioner, Lambeth Council
Jane Bowie	Director of Integrated Commissioning (Adults), Lambeth Council and Southeast London Integrated Care Board
Josephina Reynolds	Neighbourhood and Wellbeing Delivery Alliance Programme Director
Lorraine Gordon	Interim Director, Living Well Network Alliance
Oge Chesa	Director of Primary Care and Transformation, Southeast London Integrated Care Board
Simon Boote	Children and Young People Alliance Lead
Warren Beresford	Associate Director, Health and Care Planning and Intelligence, South East London Integrated Care Board
Adrian Johnson	Acting Lead Commissioner, Public Health, Lambeth Council
Alex Wicking	Senior Commissioning Officer, Public Health, Lambeth Council
Christopher D'Souza	Lead Commissioner, Public Health, Lambeth Council

1 Introductions

Those present introduced themselves. Apologies were noted from Andrew Eyres, with Ruth Hutt currently Acting Place Executive Lead Lambeth. Bimpe Oki is deputising for Ruth Hutt. Apologies were also noted for Julie Lowe, with Anna Clough deputising. Alice Jarvis is covering for the Guy's and St Thomas' vacant Board role. Fiona Connolly sends apologies with Richard Sparkes deputising. Nathalie Zacharias and Penelope Jarrett also sent apologies.

Welcome was given to Cllr Jacqui Dyer, the new Cabinet Member for Healthier Communities, Lorraine Gordon, the new Interim Living Well Network Alliance Director and Alex Jackson, the new Lambeth Together Programme Lead.

Reporting back from the Public Forum

Dr Di Aitken welcomed members to the meeting and noted the topics discussed during the public forum that included:

- Sarah Flanagan gave an update on the work she has been conducting within her Patient and Public Voice Member role. Sarah explained that she is a member of Project Smith Community Connectors who do not have a base but meet every month and in April, visited the Royal Trinity Hospice, where they care for people who are close to death and provide respite for families. Sarah explained that they are 29% funded by the NHS but for the remainder, have to raise their own funding so would like to ask if they are entitled to any further funding. Sarah also noted that the Health and Wellbeing Bus are now doing cholesterol tests as well as health checks. Sarah went on to explain that on Tuesday night, Sir Professor Michael Marmot was giving a talk at Goldsmith's College on Social Justice and Health Equity. Sir Marmot mentioned a

movement across the country towards the Marmot Principles and that the London Borough of Waltham Forest has become a Marmot borough. Sarah asked if there was any chance that Lambeth could become a Marmot borough. Sarah also noted that Mental Health Awareness Week runs from the 13th to 19th May and the theme is moving as physical activities improve mental health. Sarah explained that during the week, Active Lambeth Leisure Centres are hosting a variety of free activities.

- Cllr Jim Dickson explained that when the South East London Integrated Care Board/Partnership (SEL ICB/ICP) held their first meeting, Sir Marmot spoke about the wider determinants of good health, good environmental conditions, etc. and explained that, as an Integrated Care System (ICS), Lambeth are observing the Marmot Principles, although not formally adopted.
- Marmot Principles were also adopted as the basis for the Health and Wellbeing Strategy.

Action: Consider additional funding opportunities for the Royal Trinity Hospice.

Action: Consider whether Lambeth can become a Marmot borough. Cllr Jim Dickson to talk to Waltham Forest colleagues.

The following topics were also discussed:

- SEL Pathology Network Contract.
- Blood testing at Guy's and St Thomas' NHS Foundation Trust.
- Indoor air quality and Naloxone for opiate overdose reversal.
- Patient carers for those with learning disabilities and Lambeth GPs promoting awareness of the disability register and health checks for those who are registered.

Action: Jane Bowie and Helen Bolger to provide Cllr Jacqui Dyer with annual health checks information for people with severe mental illness.

Action: Jane Bowie to liaise with Mairead Healy and Deniece Campbell regarding patient carers for those with learning disabilities.

Action: Charli Nelson to follow up with Helen Bolger regarding attendance of Learning disability organisation at the next Inspire event.

Responses to the specific questions raised will be published on the [Lambeth Together Website](#).

2 **Declarations of Interest**

Members were asked to declare any conflicts of interests linked to the items on the agenda.

None were declared.

3 **Minutes from 21 March 2024 Meeting**

The [minutes](#) of the meeting of Thursday 21 March 2024 were agreed as an accurate record of the meeting.

4 **Lambeth Together Care Partnership – Place Executive Lead Report**

Ruth Hutt gave an overview of the key highlights in the Place Executive Lead report. The following topics were discussed:

- Cllr Jim Dickson wanted to highlight that as the government have begun detaining people with a view to potential deportation to Rwanda, this could affect Lambeth's sanctuary seeking people. As a council, Lambeth responded very quickly to this. Lambeth Council have visited

hotels where people may be on the list for deportation with as much information and support as possible, as well as a mental health assurance element. Cllr Dickson confirmed that no one has been detained or moved elsewhere with a view to deportation yet. Cllr Dickson explained it is a significant risk for the Lambeth population and confirmed the council are aligned with the risks.

RESOLVED

1. Board members noted the update on key developments since the formal Lambeth Together Care Partnership Board meeting in public on 21st March 2024.

To view the report accompanying this item, refer to pages 15 to 21 of the Board pack.

To view the recording accompanying this item, refer to part 2 of the meeting recording from 03:00 – 11:00.

5 Staying Healthy Programme – Deep Dive: NHS Health Checks

Adrian Johnson and Christopher D’Souza focused on NHS health checks and acknowledged the contributions of Dr Raj Mitra and the Staying Healthy Board who have helped inform development of the health check programme. The following discussions took place:

- Dr Di Aitken asked if the prostate specific antigen (PSA) test could be added to health checks as an additional check because since the pandemic, the prostate cancer pathway has not fully recovered.
- Paul Coles mentioned that, looking at the presentation slides, there was a significant number of people who did not receive an invite to a health check and asked why that was and whether it was a system wide issue.
- Cllr Judith Cavanagh noted the data within the presentation said residents had double the chance of dying or being hospitalised if they did not have a health check and asked if that was right and if it was right, why was that the case.
- Ruth Hutt explained in regard to PSA testing that there is an extensive list of things that could be added to health checks and even if they were extended to include the Vital 5 checks, this would include things like mental health, which is not part of the national health check offer. Locally, Lambeth are exploring adding HIV testing to our checks. PSA testing is interesting as they would need to be targeted so guidance would be required to have informed conversations with those who need a test. This then could create anxiety for those who deliver a health check as they need the ability and training to have the conversation. That is not to say it cannot be done but how do we use a population health management approach so those doing the health check are able to have that conversation.
- Ruth Hutt also explained in relation to Cllr Cavanagh’s question that the ratios are in the appendix slides. Residents who have had a health check are 20% less likely to be admitted to hospital with cardiovascular disease than those who have not had a health check. The data provided was based on the national evaluation.
- Dr Raj Mitra explained we know the current pick-up rate is 12-13% for high blood pressure or diabetes so we want to now target those who really need health checks. We need to go out to work places as people do not have time to go to their GP. Dr Mitra also explained that a healthcare assistant cannot have the conversation on the pros and cons of PSA testing, and it must be an informed discussion.
- Dr Aitken explained that work has been going on within South East London where patients have been texted information using the prostate cancer UK website then people come forward following that message. Dr Aitken explained patients use those resources so healthcare assistants can use those resources as well and do not have to have the full discussion.
- Adrian explained in relation to Paul’s question that this related to feedback from the Lambeth survey e.g. out of the 200+ people who responded to the survey, a majority had not received an invite, but noted data shows the numbers of invites issued is going up.

- Dr Mitra explained numbers went down during Covid and are now picking up again – they are still recovering.
- Therese Fletcher explained that invites never stopped going out but there was a reduction in uptake during the pandemic. We were doing pre-notification lists for practices to send their own invites out during the pandemic for those most in need for a health check. Therese confirmed that Adrian is right, and the information provided is just a snapshot of a small cohort of patients. Therese also explained it is those who do not want to engage that we need to focus on and targeting needs to be succinct and clear for the right patients to come in.
- Dr Aitken reads Penelope Jarret's comments sent in via email:
 - In my experience, there is some misunderstanding of these checks: some people think it is a check for everything, whereas it is a check for cardiovascular risk specifically.
 - Where we do identify risk, sometimes in Lambeth, it is hard to access relevant services e.g. stop smoking, weight management.
 - Slide 33 of the national review is a bit misleading - it shows that people who care enough about their health to attend a health check are less likely to have health problems, it does not prove that health checks work.
- Christopher D'Souza explained it is key that we know the target populations we need to reach. The team have been testing using the Health and Wellbeing Bus to go to targeted sites in the borough. The bus had great experiences going to bus garages, building sites, etc. There are huge opportunities to be doing that and we will work with the Local Medical Committee (LMC) as they are so critical in the changes we have made to the programme, and we want to make sure the data is fed back to them.

RESOLVED

1. Board members noted and discussed the deep dive into the NHS Health Checks programme and provided feedback and questions to support programme development and delivery going forward.

To view the presentation accompanying this item, refer to pages 23 to 40 of the Board pack.

To view the recording accompanying this item, refer to part 2 of the meeting recording from 11:10 – 42:53.

6 Sexual Health Programme – Deep Dive: HIV Testing

Alex Wicking, Jess Engen, and Nancy Padwick presented on the initiative completed during HIV testing week. The following discussions were had:

- Dr Aitken asked Alex to explain what PrEP and PEP meant.
- Alex explained they meant Post Exposure Prophylaxis (PEP) and Pre-Exposure Prophylaxis (PrEP). PrEP is a medication you can take before potential exposure to HIV to prevent you acquiring HIV and PEP is medication you can take post-exposure to HIV for a month but must be taken within 72 hours of exposure.
- George Verghese asked from a health economics perspective, would we not just add the blood test on as an extra thing to test for and have a default disclaimer within the surgery that your blood will be tested for HIV. If we were really committed to this, we would normalise this type of testing, especially across Lambeth and Southwark.
- Alex explained that would be the gold standard and in A&E, it is a true opt-out option. As a pilot programme, that is hard to enforce as it is only a pilot for a week. Going forward, that is something we would like to bring to the Board, developing appropriate ways to implement that opt-out. We are in a high prevalence area so it is an opportunity to test those people who otherwise would not be tested.
- Ruth Hutt mentioned, in regard to George's point, in 2009 we did an economic model for HIV testing in primary care and we estimated we would get a return on investment within 2-3 years. Ruth believes that would be a different answer now as testing is cheaper to run now than it was in 2009 and there are now other things in place, such as PrEP, PEP and more people on

treatment, so it would be interesting to run those numbers again. There is a desire of getting to zero in London for new infections so to do that we need to be more precise in terms of where we test.

- George thought HIV testing as part of a health check is a wrong way to go and asked are there ways we can use technology to target certain conditions, where a clinician may forget to do a HIV test.
- Sarah Flanagan is concerned about the opt-out and how it is managed as people are not making an informed choice and then are given their results, without being aware they were tested. Sarah is concerned that you have to be educated to know you need to opt-out and patients need to know what they are agreeing to.
- Cllr Jim Dickson congratulated the team on the work being completed across the borough. Cllr Dickson asked them to explain the difference between paying primary care per-test completed and paying for just offering a test or including opt-out testing in other programmes. Cllr Dickson asked Alex to explain why one is better than the other.
- In answer to Sarah, Alex explained the way Lambeth implemented opt-out testing is slightly different to the way it is implemented in emergency departments. There is not pre-counselling required but ahead of ticking the button to request a HIV test, there was a line that would be mentioned along the lines of, you will also have a HIV test unless you opt-out, so patients are informed a HIV test is included. In A&E, they have posters up, so that is the way they are informed.
- Sarah asks what if people do not have English as a first language. Alex believes there are posters in other languages.
- In answer to Cllr Dickson, the recommendation to move to pay-per-offer was more based on the process as the pay-per-offer often results in an offer only being included as part of a text or a registration form, rather than an actual intervention and test being completed. Payment on result encourages the practices to follow up, so practices get paid when they have the test result.
- Ruth picked up on Sarah's point – the way we normalise and destigmatise testing is having it as part of normal conversations and other testing. It is far better someone knowing they are HIV positive than not knowing so you can protect yourself and others around you. It is about encouraging people to test and normalising that, rather than making it a big deal. If you are diagnosed as HIV positive, chances are you will not know what that means for you but that goes for any long-term condition you could be diagnosed with. We have an approach that normalises testing and lots of support is offered on the back of a positive test result. People are usually offered support within 24-48 hours of receiving a positive test. When we originally did the HIV testing in A&E and primary care, everything was translated into local languages so hopefully that is still in place, but we can follow up if that is the case for those where English is not their first language.

Action: Ruth Hutt to find out if the original HIV testing information translated into every language is still within the borough.

RESOLVED

1. Board members noted the work carried out during National HIV Testing Week, the key findings and considered the recommendations made.

To view the presentation accompanying this item, refer to pages 41 to 59 of the Board pack.

To view the recording accompanying this item, refer to part 2 of the meeting recording from 42:56 – 1:22:00.

7 Lambeth Together Assurance

Warren Beresford presented on the Lambeth Together Assurance Group that took place in March. The following discussions took place:

- Rich Wiltshire wanted to focus on the risk register, namely, on the finance position. Rich noted that M11 sounds like we are doing well but there is a minimum savings requirement of £4.7m and asked is that why it is counted as a risk, and do we need to save another £1.3m. Rich asked regarding 516, what is the risk exactly there. 515, is this part of the audiology service. Rich used the service last week and explained it is a 5-star service. Rich is aware of other deaf people outside the borough and in comparison to other boroughs, our service is exemplary, and Rich believes this is the reason for the overspend. 473 – a report came out this week from Community Pharmacy England which highlighted critical levels that some pharmaceuticals are short of medication, including insulin, and wondered how that is assessed in our risk highlights.
- Edward Odoi explained that overall, we came under budget in regard to the £1.3m Rich mentioned. Rich asked why a risk is there under 516 saying the risk rating is 12. Edward explained we carry forward the underlying risk from the previous financial year into the new year and we will reassess this within the new financial year.
- Jane Bowie explained risk 515 is not linked to the audiology service and it is linked to recommissioning by a consortium of 21 London boroughs that are part of the joint community equipment contract that was reprocured at the start of April 2023. Jane also confirmed there have been issues with the procurement process. Lambeth is one of the areas that is part of the consortium and that is why it is on our risk register.
- Rich asks if audiology is part of the finance risk and Jane explains it is not – it is continuing healthcare and prescribing costs. Prescribing budgets are delegated to Place, so we monitor the risk to the budget spend.

RESOLVED

1. Board members noted the report from the Lambeth Together Assurance Sub-Group and the associated Integrated Assurance Report presented 26th March 2024.

To view the presentation accompanying this item, refer to pages 61 to 120 of the Board pack.

To view the recording accompanying this item, refer to part 3 of the meeting recording from 00:00 – 19:36.

8 Primary Care Commissioning Committee (PCCC)

Oge Chesa presented on the Primary Care Commissioning Committee meeting held in March. The Board ratified the decisions made at the meeting.

RATIFIED

1. Board members noted the update on discussions held at the Primary Care Commissioning Committee on 06 March 2024 and ratified decisions made.

To view the presentation accompanying this item, refer to pages 121 to 131 of the Board pack.

To view the recording accompanying this item, refer to part 3 of the meeting recording from 19:45 – 35:04.

9 Business Planning: Taking Forward 'Our Health, Our Lambeth' 2023/4 Annual Review and 2024/25 Action Plan

Oge Chesa and Warren Beresford presented on the Our Health, Our Lambeth Annual Review. There were also presentations from those with lived experience to reflect on how the plan has impacted on them over the last year. The Board heard lived experiences from a user of the Thriving Stockwell Community Living Rooms Health and Wellbeing Groups and a user of Lambeth's maternity services. The following discussions were had:

- Dan Stoten thanked Monique for attending the Board and sharing her maternity experience. Dan explained Monique has agreed to support the Maternity Voices Partnership that is being

developed in South East London. Dan explained we are trying hard to get to the bottom of data and lived experiences in the borough and thanked Monique again.

- Monique explained she saw many women in hospital who did not have a voice and felt she always advocated for those who did not have a voice. Monique wanted to thank Simon Boote, Children and Young People's Alliance Lead, for all the support he had given her.
- Lorraine Gordon thanked Monique for sharing her story and, thinking about perinatal in-reach, asked what Monique thought would have helped her in her situation.
- Monique expressed she is lucky to have been referred to the South London and Maudsley Perinatal team and the lack of funding is the issue, appointments were cancelled, there were staff shortages and while some aspects of the perinatal care were good, Monique received support from a nursery nurse who helped with things that were outside of her remit. What would help would be investment in the service. If the help was consistent and there was more of it, that would help.
- Sarah Flanagan spoke as a former midwife and asked if Monique made a formal complaint and urged Monique to complain if not. Monique has not complained due to her mental health following her triplets' birth but will make a formal complaint going forward.
- Anna Clough wanted to link with Monique to get Monique and the maternity team at King's together to discuss what happened to Monique and to make it easier for her to feedback her experience.
- Dr Raj Mitra confirmed we are always fighting for more money for maternity and children's services. Dr Mitra also asked if we could get more funding for the Community Living Room to increase their hours.
- Cllr Dickson wanted to thank the team for all their work with the plan.

Action: Monique and Anna Clough to link to meet with the King's Maternity team.

Action: Christopher D'Souza to consider opportunities to get more hours for the Community Living Rooms.

APPROVED

1. Board members noted contents of the document, approved the Lambeth Together action plan for 2024/25 (contained within) and approved for the document to be published on the Lambeth Together public website.

To view the presentation accompanying this item, refer to pages 133 to 190 of the Board pack.

To view the recording accompanying this item, refer to part 3 of the meeting recording from 35:13 – 1:17:50.

10 Questions from public attendees

No questions were asked.

11 AOB

The date of the next Lambeth Together Care Partnership Public Board meeting was confirmed as 4th July 2024, in person only, location to be confirmed. The meeting in July will not be online.

The meeting ended at 16:52.

CHAIR
LAMBETH TOGETHER CARE PARTNERSHIP BOARD
Thursday 09 May 2024



Lambeth Together Care Partnership Board

Title	Lambeth Together Place Executive Lead Update
Meeting Date	11 th July 2024
Author	Ruth Hutt – Acting Place Executive Lead Lambeth, Corporate Director, Integrated Health, and Care, Lambeth Council and South East London Integrated Care Board
Lead	Ruth Hutt – Acting Place Executive Lead Lambeth, Corporate Director, Integrated Health, and Care, Lambeth Council and South East London Integrated Care Board

This item is for:

<input checked="" type="checkbox"/>	Information	<input type="checkbox"/>	Discussion	<input type="checkbox"/>	Decision	<input type="checkbox"/>	Ratification
-------------------------------------	--------------------	--------------------------	-------------------	--------------------------	-----------------	--------------------------	---------------------

Recommendations:

The Lambeth Together Care Partnership Board is asked to:

1. Note an update on key developments since the formal Lambeth Together Care Partnership (LTCP) Board meeting in public on 9th May 2024

What other groups or committees have considered this item to date?

N/A. Individual items addressed at various fora.

Summary and Impact on Inequalities

An update to the Lambeth Together Care Partnership Board (LTCP) from the Lambeth Acting Place Executive Lead, Ruth Hutt, reporting on key issues, achievements, and developments from across our Partnership.

This page is intentionally left blank

Lambeth Together Care Partnership

Place Executive Lead Report 11th July 2024

Ruth Hutt – Acting Corporate Director, Integrated Health and Care

'Our Health Our Lambeth'



At our Lambeth Together Care Partnership (LTCP) Board meeting in May 2024, the first annual review of ['Our Health, Our Lambeth'](#), Lambeth Together's five year health and Care Plan was approved by the LTCP Board. This review has been crucial in refining our approach, helping us understand the needs of our staff, partners, and residents to effectively deliver on the outcomes and aspirations we committed to just over a year ago. The insights gained over the past year have further shaped our strategies and informed our planned activities for 2024-2025.

The approval of the annual review also provided an opportunity to reflect on the many accomplishments we've realised through our collective efforts. We had the privilege of hearing directly from service users who shared their experiences, offering invaluable insights into how our collaborative work between partner organisations has positively impacted their health and community whilst providing also a stark reminder of how much we have left to deliver in ensuring we tackle health inequalities across the system.

As we move forward into the next year of our plan, we extend our heartfelt appreciation to all those who have contributed to our progress. We are excited about the future and remain committed to achieving even more ambitious goals and breaking down barriers in the coming years.

You can read the full [2023-2024 Annual Review on the Lambeth Together Website](#).

Our Governance and Leadership

Our Leadership: You will recall at our March Board meeting we said goodbye to two retiring Board members, Our LT Board Lay member Sue Gallagher and also Sarah Austin, Chief Executive of Integrated and Specialist Medicine at Guy's and St Thomas' NHS Foundation Trust (GSTT). I am very pleased to now welcome Louise Dark to the Board, who takes up Sarah's position at GSTT and the Lambeth Together Care Partnership Board. Louise joins us from the Barking, Havering and Redbridge University Hospitals NHS Trust, where she was Managing Director of King George Hospital, and the responsible executive for leading and managing the site, with a particular focus on the urgent and emergency care pathway. She was also the Trust's Place Based lead for Redbridge. We look forward to her valuable insights and leadership as part of Lambeth Together.

We have been actively seeking to recruit the successor to the role of the LT Board Lay Member and have particularly tried to attract applications from Black, Asian and Multi-Ethnic communities, as we are currently under-represented at Board level. Details were published on our LT website, [LT LinkedIn](#) and an edition of the Lambeth Bugle publication; the post has been readvertised. The Lay Member provides a crucial function as part of our Board, including Chairing of the LT Assurance Group, LT Primary Care Commissioning Committee and being an active member of the LT Equalities Group. The role is important in helping to shape strategic direction, ensuring governance excellence and fostering impactful community relationships to guarantee that the LTCP has appropriate arrangements in place to secure public and patient involvement.

Recruitment to this post is ongoing and I look forward to having an update on this at the next Care Partnership Board.

Another role that supports our Leadership on the Lambeth Together Care Partnership Board is that of the Patient and Public Voice (PPV) Members, who support us to make better decisions and to be more connected with our communities, ensuring that significant issues for Lambeth people are identified and heard. In September 2022, Sarah Flanagan and Rich Wiltshire joined their first LTCP Board meeting as our PPV members. These Board positions were appointed for two years, with the term now ending in August 2024. On behalf of the LTCP Board we would like to extend our gratitude to Sarah and Rich for the dedication they have shown to this position and the impact this has made for our residents across their term.

Recruitment for the PPV positions is now also underway; we're looking for people who are interested in health and care, live in or use health services in Lambeth, and who are linked to local networks. The role is focused on supporting us in our aims for health improvement and understanding the experience of Lambeth residents who need health and care services. People from all sections of the community can apply - we'd especially like to attract younger adults, disabled people, people from LGBTQ+ communities and people from Black and multi-ethnic communities, to help the Board in its ambition to reflect the Lambeth population. For more information about the roles, how to apply and an invitation to an online information session visit <https://www.lambethtogether.net/public-voice/>

Clinical and Care Professional Leads (CCPL): A recruitment drive has been underway across South-East London Integrated Care Board (SEL ICB), including roles in Lambeth for our next cohort of CCPLs (clinical and care professional leads) for the next two years. A CCPL is someone who supports partners to work together across organisations and professions to improve the health and wellbeing of people in their patch. The roles provide a brilliant opportunity to shape and influence the future direction of integrated health and care in the borough of Lambeth and take a key role in the development of our Alliances and Local Care Partnership in a wide range of areas across health and care.

The sessional roles include Leads for each of our Alliances; Children and Young People Alliance, Living Well Network Alliance and Neighbourhood and Wellbeing Delivery Alliance, a Board Leadership role, and a wide range of lead areas such as Cancer (Living with and Beyond), Chronic Pain, CYP (Children Young People), Engaging with Communities, Learning Disabilities & Autism, Long term conditions, Diabetes and Obesity / Medicines Optimisation, Maternity, Mental Health, Planned Care and Diagnostics, Population Health Management/ Inequalities, Primary and Community Care (inc. Estates Development), Quality and Safety, Staying Healthy, Urgent Care, Workforce Development. Click here to meet [Our Clinical and Care Professional Leads - Lambeth Together](#).

I would like to take this opportunity to express my gratitude to all our CCPLs for their incredible contributions over the past two years. I am excited to see we have some continuity from the previous cohort and some new faces to ensure continued contribution and achievements from the CCPLs in the coming two years.

Organisational Development: In previous updates on the OD (organisational development) programme it was announced that the LT Care Partnership Board and Exec agreed an OD programme with the aim of developing capability to work effectively together to deliver the ambitions in the Health and Care Plan - Our Health, Our Lambeth. Follow up actions included a focus on equality, diversity and inclusion and taking forward an anti-racist approach, making best use of time together, and ensuring ownership of key priorities across the system to enable change. We are now approaching the end of the programme, however the work will continue with a handover from the OD Professionals, who provided and facilitated the programme, to the LT Care Partnership Board and Exec Leaders to continue this important work.

System Pressures

There continues to be considerable pressure across the health and care system from the level of demand for scheduled and unplanned care. The latest junior doctors industrial action began 27 June and ending 7.00am Tuesday 2 July which will further impact on delivery of services. Following the cyber-attack on the provider Synnovis, colleagues both within and in the surrounding Lambeth system have been working incredibly hard and have been establishing workarounds for pathology support. The impact of the cyber-attack on patients should not be underestimated and a helpline has been set up to provide support. In Lambeth, primary care

have been gradually managing to increase the number of tests they can offer thanks to the mutual aid provided by an alternative pathology support.

Equality, Diversity and Inclusion (EDI) Group

Our Lambeth Together EDI group has been actively engaged in various initiatives to promote equity, diversity, and inclusion within our community. Recently, Alicia Lyons, our newly appointed engagement manager led a discussion on Public and Patient Voice (PPV) recruitment, discussing strategies to enhance participation and representation. Following this, Jasjot Saund from the Public Health team presented the Childhood Vaccinations in New Spaces Pilot highlighting innovative approaches to improve vaccination rates among children in underserved areas.

Our EDI development manager, Asha Winifred shared an update on the Inspire Lambeth Black Communities Health and Well-being Day, to discuss the event's goals and activities aimed at improving health outcomes for Black communities. This event, scheduled for July 6th, promises to be a significant step towards addressing health disparities and fostering community well-being through targeted interventions and engagement. There was also a call to action for volunteers to participate on the day.

Finally, Jessica Levoir presented the South-East London (SEL) impact on urban health work on Black maternal health. Her presentation shed light on the challenges faced by Black mothers and ambitious new ways to improve the experience and maternal health outcomes for them. These sessions underscore the EDI group's commitment to addressing critical health issues and promoting equity within our community.

Our Delivery Alliances – a selection of highlights

Living Well Network Delivery Alliance (LWNA): The LWNA had two successful away days to revisit our priorities, deepen connections and remind ourselves of our agreed Alliance Principles, Values and Behaviours. They are now developing the outputs into a refreshed business plan.

I'm pleased to say that Alliance members have been visiting New Douglas Bennett House (NDBH) at the Maudsley site to familiarise themselves with the new inpatient wards that are expected to open to Lambeth patients by the end of this year. NDBH provides modern mental health inpatient wards, with an improved environment for our patients and staff.

The LWNA presented to the Council's Management Board, including their new cabinet member job share Councillor Jacqui Dyer, informing them of plans to prioritise the delivery of PCREF (Patient and Carer Race Equality Framework) in Lambeth.

Finally, the LWNA has contributed to a new staff newsletter, which will go to all Alliance staff on a regular basis. This is part of a wider plan to improve internal communications and ensure all parts of the Alliance are kept informed and know about other teams and services.

Children and Young Person Delivery Alliance (CYP): The Children and Young Person Alliance remains committed to supporting the development of maternity services for women and birthing people in Lambeth. In May, the Alliance had the opportunity to present an update at the Lambeth Health & Wellbeing Board. The report highlighted initiatives from Guy's & St Thomas' and King's College Hospital, which address the needs of marginalised and underrepresented women. These efforts include culturally sensitive education and support, aligning with the Lambeth Health and Wellbeing Strategy 2023-2028.

In June, the Alliance strengthened its ties with community services supporting Lambeth's black women and birthing people. The Alliance co-presented maternity services offered by the Motherhood Group, based at Lambeth Town Hall. The Motherhood Group will support inclusivity and equity initiatives driven by the Alliance and will help co-produce future initiatives and pilots.

We are also pleased to announce the successful appointment to the Maternity Clinical Care Professional Lead role. Congratulations to Claire Spencer, Senior Midwife at Evelina London, for securing the post. Claire has been the Clinical Lead in Maternity for the Alliance, bringing years of experience and insight. Her leadership will be pivotal as the Alliance advances its maternity initiatives.

Neighbourhood and Wellbeing Delivery Alliance (NWDA): Last month we launched our Renal Cardiometabolic project, which aims to, provide education and support to GPs, enabling the identification of Chronic Kidney Disease (CKD) and the ability for referred and triaged patients to be managed effectively and appropriately away from a secondary care setting. This will reduce waiting times and improve patient experience and health outcomes, as well as quality of life. The GP Federation are working to deliver the pilot with three PCN's in the Borough (North Lambeth, Clapham and HBD), and will run until July 2025.

Lambeth Country Show



Ruth Hutt, Corporate Director for Integrated Health and Care and Lambeth's Director of Public Health, with Active Lambeth at the Lambeth Country Show 2024

Once again, Lambeth Together were able to provide vital health and care information and services at the 50th Lambeth Country Show weekend in June. This year, Lambeth Together were allocated a much bigger tent and partnered with Adult Social Services and Active Lambeth. Over the course of two days, we spoke to hundreds of local people and provided information, advice and signposting on health issues and on care and support services available. Active Lambeth stationed their exercise equipment outside of the tent and gave gym demonstrations inside whilst promoting their membership offers.

GPs, pharmacists and the Beacon project delivered over 300 blood pressure checks, giving people advice about healthy living, of which 59 people were recommended to visit their GP.

Colleagues from Public Health, LWNA, GSTT, King's College Hospital, Moorfields, and the NHS Healthier You Programme Healthwatch Lambeth and our Health Champions, provided information on local care and support and specific information on breast cancer screening, eye health and diabetes prevention. Immunisation nurses stationed in the Children Services gave advice on receiving the Measles, Mumps and Rubella vaccination and other childhood immunisations.

Our Age Friendly team spoke to people about the Borough's draft Age Friendly Action Plan, and their involvement in making Lambeth a place to age well. Lambeth Together colleagues heard from around 100 people on what matters to them or their families about their health and care. Adult Social Care and representatives from Age UK, who operate Lambeth's front door, listened to views about adult social care and gave advice about the services available.



Aderito, Health Champion, at the Country Show 2024

You can read more on the Country Show on the [Lambeth Together Website](#)

Fuller Delivery

In 2022 the Fuller Stocktake set out the next steps for integrating primary care, with a particular focus on improving the access, experience and outcomes for our communities. The review included eight recommended areas for action for Integrated Care Systems (ICSs) to implement. In Lambeth we have started an iterative process to establish a baseline of our current progress in delivering the recommendations as a system. Our initial review identified a number of key successes to date and ongoing areas of work that we will build upon to deliver the recommendations, including how we continue to develop our workforce, make better use of our estates and assets and improve our digital infrastructure and use of data and intelligence.

Reflecting on the review, I know we have already made significant strides in adopting a more integrated approach through our Lambeth Together Alliances and Programmes and through the delivery of Our Health, Our Lambeth. For example, our Thriving Communities programme is bringing local people together with Primary Care Networks (PCNs) to co-design and co-deliver accessible health and wellbeing support in the community. The Living Well Network Alliance's (LWNA) Staying Well service is supporting patients to 'step down' from LWNA services and remain under GP care who might otherwise be referred to secondary care. Crucially, the voice of primary care is well established at system level, with primary care represented on our place-based board and across our partnership meetings and this will be further strengthened through our new CCPL forum.

In addition to this, work is underway in developing both the 'Lambeth Offer', our new primary care commissioning arrangements for PCNs from April 2025, and our 111 re-commissioning to ensure same day access for patients from winter 2025-26.

Our next steps will be to develop and implement a comprehensive action plan that brings together all of these different initiatives and delivers a more joined-up approach to integration across each of the eight areas. Central to this will be further alignment between primary care and our delivery alliances to ensure we make integrated teams a reality across all neighbourhoods.

PRIDE Month

For Pride Month, members of our Equity, Diversity, and Inclusion (EDI) group had the unique opportunity to attend an enlightening talk hosted by the Public Health Equity and Inclusion Team. The event centred on "ParaPride," an initiative that highlights the intersectionality within the LGBTQ+ community. ParaPride is a movement that brings attention to the experiences of LGBTQ+ individuals who also identify as having disabilities, underscoring the need for inclusivity and recognition of diverse identities within the broader LGBTQ+ community. Daniele Lul, Community Engagement Director of ParaPride, provided invaluable insights into the unique challenges and experiences faced by LGBTQ+ individuals with disabilities, emphasising the compounded forms of discrimination they face, the need for greater visibility and representation, and the importance of inclusive health services and barrier-free environments. The talk highlighted the importance of community support networks and advocacy for inclusive policies and legislation.

Additionally, Do It London (DIL) executed a comprehensive advertising strategy during Pride Month, this is the comms and media campaign component of the London HIV prevention programme. They purchased web banners on websites covering London events, lifestyle, entertainment, and 'Pride' search terms. They also placed a print ad in the Pink Guide magazine, which was distributed at London Pride events. Finally, DIL participated in the Pride in London march on 29 June, walking with the Lambeth Together LGBTQ Forum, demonstrating their support and solidarity with the LGBTQ+ community.

Key Campaigns for Lambeth Together



Clinicians at the Lambeth Country Show carry out a blood pressure check on Oge Chesa, Director of Primary Care and Transformation

High rates of measles and pertussis have meant that immunisation has been a focus of comms campaigns, focusing on raising awareness of the importance of immunisation against measles, especially for children and younger adults who have not received a first vaccination or who have missed their second dose. The risk of large-scale outbreaks remains a concern in Lambeth and across London. We have also had a focus on promoting uptake of immunisation to protect against whooping cough (pertussis), particularly among pregnant women, following cases of the disease among infants under immunisation age, who can be protected if their mother has had the vaccine. As bookings drew to a close for seasonal Covid vaccination, we continued to remind eligible groups through our promotional activity that they could still access this protective vaccination until 30 June.

Throughout May Measure Month and for World Hypertension Day on 17 May, we shared information on the risks of high blood pressure, and how quick and easily accessible checks at local pharmacies can support people to understand and manage their own risks. Community pharmacy colleagues supported promotion and uptake by joining forces with our Health and Wellbeing Bus team at Brixton Market and Windrush Square. We also widely promoted the importance of 'knowing your numbers' at this year's Lambeth Country Show, where attendees took up our offer of a free blood pressure check. Among other health campaigns we have supported in Lambeth is the drive to increase the uptake of cervical screening during Cervical Screening Awareness Week. One in three people miss their screening when invited.



Inspire Black Communities Health and Wellbeing Day

Black Communities Health & Wellbeing Day
Health, food & music
Saturday 6 July, 11am to 4pm
St Mark's Church Kennington
(opposite Oval tube station)
337 Kennington Park Road, SE11 4PW

- Good food and music are the secret to a happy body and soul.
- We'll have FREE African and Caribbean food and a DJ
- Tips from health professionals
- Meet your primary care team
- Blood pressure, eye and cardio-vascular disease checks
- Free fun activities

Scan the code below to learn more.






**Just turn up,
no booking
required!**




Finally, the Inspire Black Communities Health and Wellbeing Day on 6th July presented an opportunity to engage with our Black community, and builds on previous events over the last few years. The success of these events has meant they have been replicated in other boroughs across London and are part of our collective work to address the inequalities experienced by our Black communities in relation to health. Thanks to everyone who volunteered to help out on the day.



Lambeth Together Care Partnership Board

Title	Living Well Network Alliance (LWNA) – A focus on inequalities
Meeting Date	11 th July 2024
Author (& role / title/s)	Guy Swindle - Deputy Director, LWNA
Lead / Presenters (& role / title/s)	Lorraine Gordon Interim Director LWNA, Guy Swindle

This item is for;

<input checked="" type="checkbox"/>	Information	<input checked="" type="checkbox"/>	Discussion	<input type="checkbox"/>	Decision	<input type="checkbox"/>	Ratification
-------------------------------------	--------------------	-------------------------------------	-------------------	--------------------------	-----------------	--------------------------	---------------------

Recommendations;

The Lambeth Together Care Partnership Board is asked to;

1. Note the progress of the Living Well Network Alliance against its Health and Care Plan and the continued focus on tackling inequalities in mental health, using the Patient and Carer Race Equality Framework (PCREF) to drive culture and system change.
2. Note the formal extension of the LWNA's Contract for a further 3 years to 31st March 2028.

What other groups or committees have considered this item to date?

N/A

Summary and Impact on Inequalities

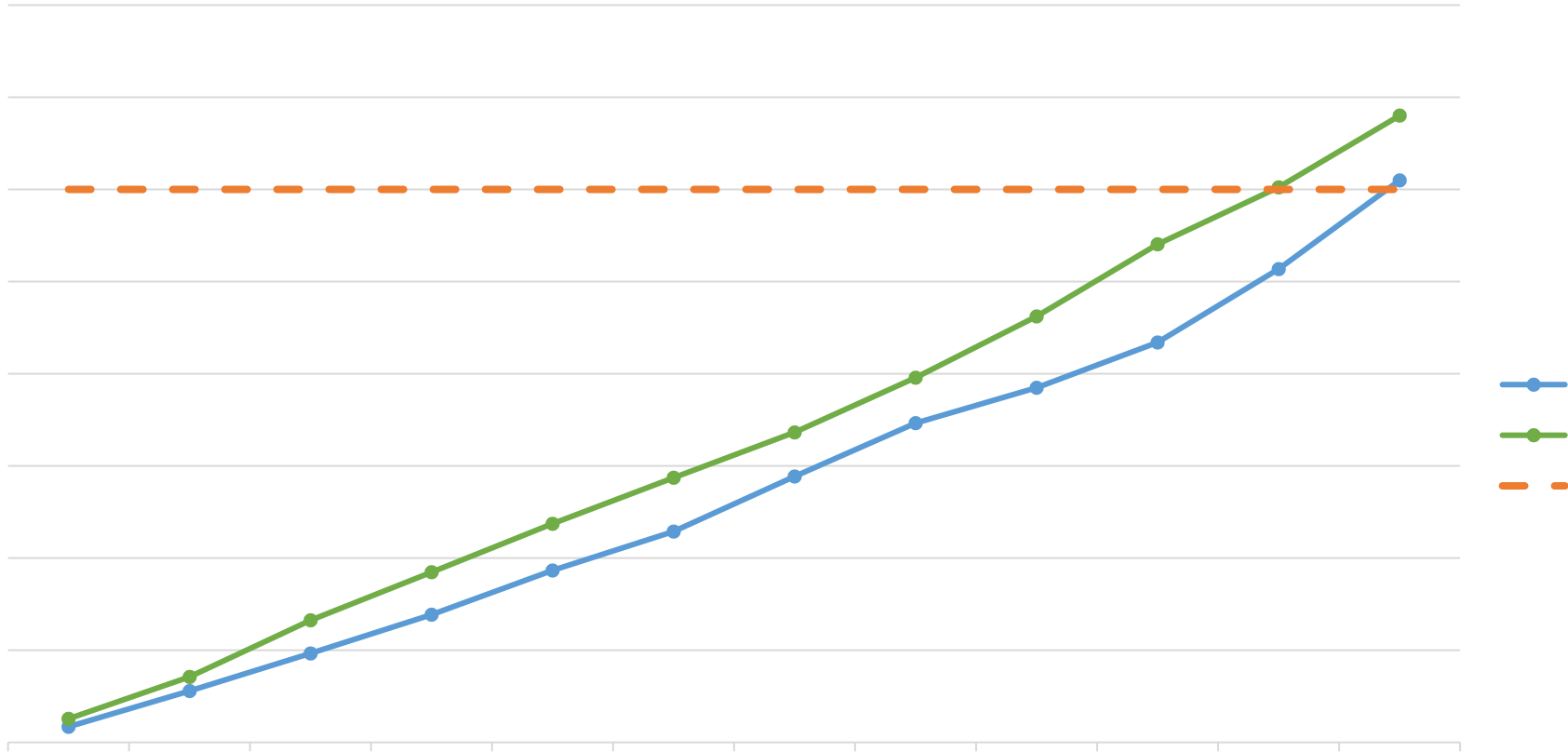
Tackling inequalities in mental health, particularly in Black communities, is one of the LWNA's six priorities. PCREF is a national programme (pioneered in Lambeth and South East London) aimed at tackling racial inequalities in mental health.

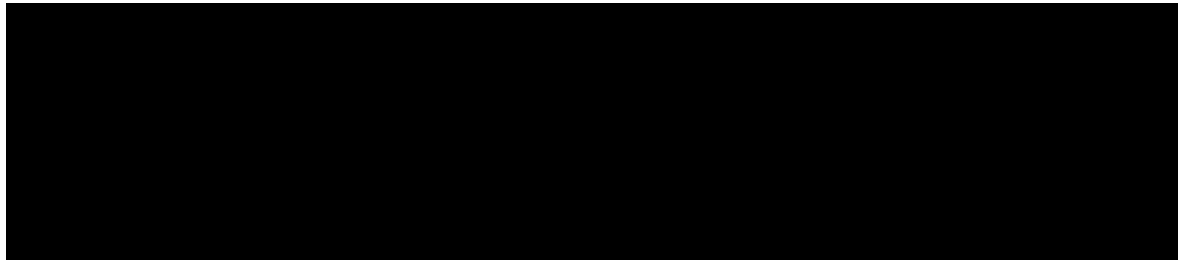
This page is intentionally left blank

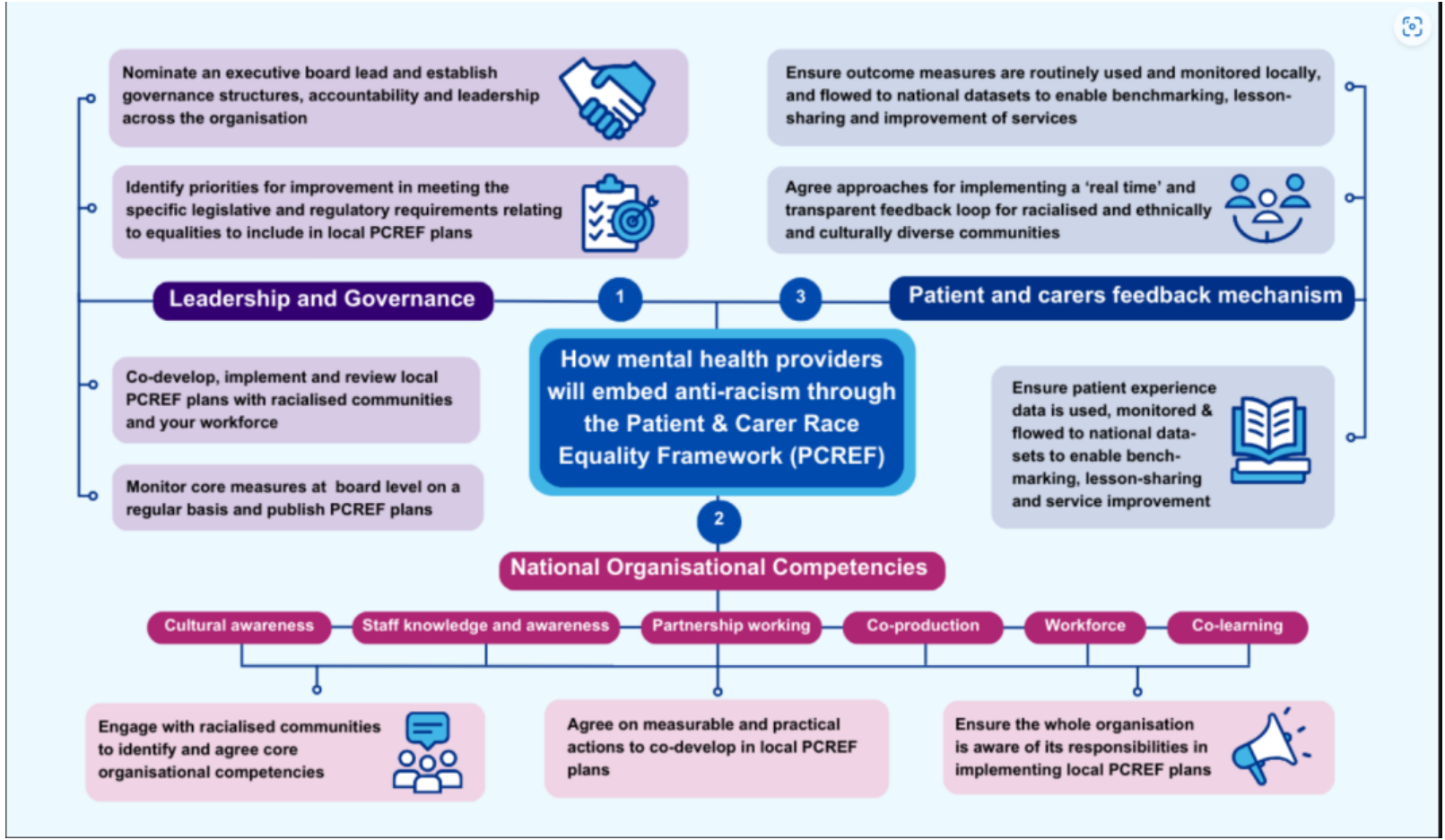


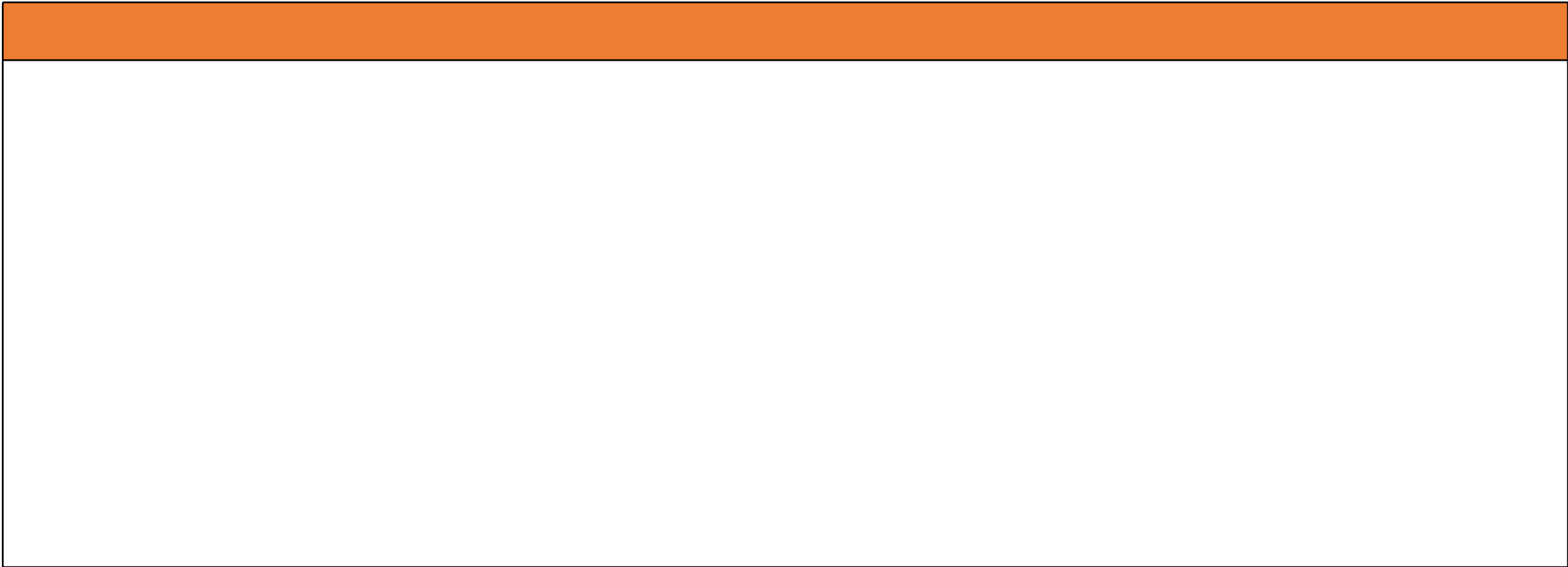


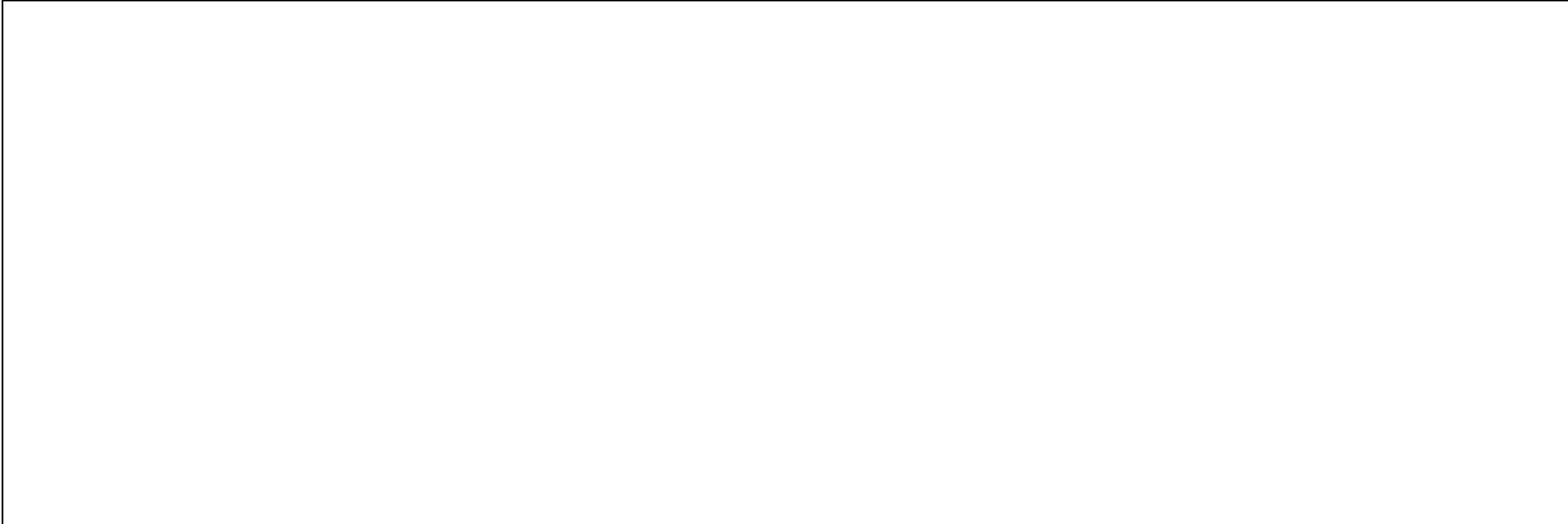












Cost of Living



**UTILITY
BILLS**







Lambeth Together Care Partnership Board

Title	Healthwatch Lambeth update
Meeting Date	11 th July 2024
Author (& role / title/s)	Mairéad Healy (CEO), Vanita Bhavnani (Research and Engagement), Eulalia Gonzalez (Project Coordinator) and Anna D'Agostino (Engagement officer).
Lead / Presenters (& role / title/s)	Mairéad Healy (CEO), Vanita Bhavnani (Research and Engagement), Eulalia Gonzalez (Project Coordinator) and Anna D'Agostino (Engagement officer).

This item is for;

<input checked="" type="checkbox"/>	Information	<input checked="" type="checkbox"/>	Discussion	<input type="checkbox"/>	Decision	<input type="checkbox"/>	Ratification
-------------------------------------	--------------------	-------------------------------------	-------------------	--------------------------	-----------------	--------------------------	---------------------

Recommendations;

The Lambeth Together Care Partnership Board is asked to;

1. Note the progress by Healthwatch Lambeth

This page is intentionally left blank

& '

(\$

! !

" # \$ %

() % \$

* & + + " * , (-
(.

!

/ % ' '\$ \$

\$ %

"

' 0

1 \$ ' % 2 %

* , '\$ % 0

3 % % \$ 0

%

&&

4

,

2

,

5

%

0 0 \$ 0 6 %
(7 ' % 0 1 0 \$ 0 1
4 % % 8 9 ,
%

4 % ' 0 (\$ % '' % % % ; 0
1 % ''
\$
, % 1 % % - ' \$ % <
. 1 % 1 0 ' 0 \$ % % <
0 <
, % ' 0 % % ' % 7 ' ' \$
, % ' 0 % % ' % % '' \$ % '' \$
\$ % % '' \$ 1
9 0 = , % 0 0 > % % %
\$
3 1 0 %

, ' 0 % 1 \$ 0 ' 0 % %

? 1 ' ' 0 @ % 1 0 ' A % % %
% ' 0 \$ 1 ! ; 9 ' % B % %
C (% % 5 % 0 \$ % % ; (' % @ % %
7 ' 1 ' ' 1 ' ' D % ; \$ % % 0 0 A 1
? , % \$ ' % ' % 0 ? , 0 % % ; , % 1 \$ 0
@ % A 0 ; # , @ % , % 0 # % 0 ; # % #
1 1 A 1 C D % % % 1 \$ % #
1 1 1 C D % % 1 \$ % D

, ' 0 1 \$ ' ' %

? 3 % 0 %
' % \$ % 0
% ' % D

? , % % % % % % % %
(% % % % % % % %
% % # 5 \$ % % % % % % % %
' 5 \$ % % % % % % % %
, # 1 \$!
, # , #
0

(% 1 \$ % ? %
% 7 ' % D %
; \$; %

, ' 0 % \$ % % %

? \$; 0 0 ' % % 0 0
% ; E % , % 0 % 0 \$
9 4 \$; 9 % \$; , % # % % ; ,
% \$; 9 % \$; , % 0 0 % ' ; ,
% \$; 9 % \$; , % 0 \$ D , % 4
% \$; 9 % \$; , % 0 \$ D , % 0

" % % % \$
8 % :

? , 0 / % ' % ; (;
% 1 0 ; , # % %
0 % 1 ' ; (# 1 ;
' % ; \$; % # % 5 % 1 \$ % %
% ' % % ; , # %
\$; ((# % 1 ' % D ;

%

.

?

0

\$

%

\$

%

'

%

%

D

?

%

''

\$

'

%

'

%

'

\$

1

0

\$

\$

\$

1

%

'

D

\$

%

\$

%

' % >

3

' \$ % ''

\$

\$

' 1 ' ' 1

?

%

\$

'

D

? E

\$

\$

'

%

0

% ; (

\$ %

\$

\$

0

\$

7

0

'

'

%

%

%

\$;

'

%

%

'

'

\$

' %

%

'

'

0 0

;

(

' %

0

\$

\$

%

7

% D

E 7 % ' % -

4 ' \$ % % 0 0 1

/ \$ ' 0 \$ % %

\$ \$ % % ' \$ % 8 * : 5 % 1 %
% % % \$ % \$ = % %

4 " # \$ %

; \$ % F ; \$; 1

. % / %
% 0 % 7' \$
% 0 ' % % %
%
+ % ' % % -
, 0 ' 1 % % ' % %
% ' %
4 9 % ; \$;
4 *
1 %
%

+ % % % % ' -
G : ' % ; \$; / 3 %
: % ' \$ 0 0 ' 5 % ; \$; \$ %
H : % % % % \$, 0 2 9 \$ ' % \$ % ; \$;

. \$ % % ' %

" \$ % 7 %
7 ' 0 %
0 %

4
% \$ %

ET
%

4 % % - / % / 9

I J 0 % ' % ' % 7 ' % '

K % 0 -

% %

4 0

/

, 0 9 \$ ' % \$
9

1 * , ' 00
\$

% %

.

. % ' ' . % % % ; %
7 ' % ' ' . % % % ; %

'

!

" # "

\$

? (1 L . % 2 % \$ \$ 0 0 ; D

+ % ' \$ % ' " % \$ ' % %

9 ' 0 5 ' 5 % ' % \$ 9 1 \$ G# ' M
% 9 (% (% 8 9 ((: K \$ % 4 \$ % ' % % 8 K 4 : \$ %
' ; (% ' 0 % \$ % ' 7 ' % % ' 1 % ' GI ' ' \$ %
' ;

.' % <
/ % 7 7 ' % 0 = 0 % 2 0 % \$
(% \$ ' % % 1 % 0 ' ' 0 % ' ' % % %
> % ' % '' % 00 0 ;
9 % 0 % \$ ' % % % 0 ' ' % % ;
\$ \$ % > ' 7 % 1 % % % 1
\$ % % > % % % '' ;
1 \$ % % % 1 0 % % ' % \$ \$ '
\$ 7 ' % ;
3 ' ' \$ ' 0 % \$ % 0 ' 0 ;

00 % 1 <

9 % \$ 0 = ' ' 0 1 9 ((K 4 - = ' ' : 7 ' %
4 = % \$ \$ ' % % + % 8 % \$ \$; %
' % % % '' % % \$ ' \$ % % \$ % = % 0 % % % ;
/ \$ % % 00 \$ ' \$ % % \$ % 0 % % ' ' % % ;
, ' \$ % \$ 1 % % % % % % % % % % % %
% % ;

& ' \$ / \$ 0 1

/ % = ' \$ / ' % 6 7 4 9 %

% % ' \$ \$ ' \$ 0 % \$ 7 '
, % % % % \$ % %

' % + (% % 1 % %

+ 0 \$ %

, B % % \$ 6' 1 0 % %
\$ % 1

" \$ 7 % 1 % ' 6 ' 5 \$ 1
1 %

* ' \$
/ \$ 0 % % // \$ ' % % % %
0 1 ' \$ \$;
. " 6 % \$ \$ %
% \$ 0 \$ %
% 0
' 5
4 \$ % N \$ / ' % 6 \$ \$
\$ % % % % \$ %
% % % % ' %
% % % % 0 0 ' %
% % % % 0 0 1 ;

4

\$ %

4 - O P P I Q = R = ' O 3

/ % - O (' (

- O 0 F ; \$; 1

. % - ; ; \$; 1

0 ' % % ' %

% ;

(

1

L

S

%

% <



Lambeth Together Care Partnership Board

Title	Due Diligence process related to AT Medics contracts
Meeting Date	July 11 th 2024
Author	Holly Eden, Director of Community Based Care (SEL)
Lead	Oge Chesa - Director of Primary Care and Transformation

This item is for;

<input type="checkbox"/>	Information	<input checked="" type="checkbox"/>	Discussion	<input type="checkbox"/>	Decision	<input type="checkbox"/>	Ratification
--------------------------	--------------------	-------------------------------------	-------------------	--------------------------	-----------------	--------------------------	---------------------

Recommendations;

The Lambeth Together Care Partnership Board is asked to;

1. Review the summary paper, the full due diligence report and the follow-up statement from Operose Health on debt charges attached as Appendices A, B and C to this paper
2. Request further information from AT Medics, Operose and the Buyer as to the debt charges, in particular the change in any potential liabilities impacting on AT Medics
3. Continue to maintain scrutiny (via its Primary Care Group) on the quality and delivery of services delivered by the practices impacted by the change of control, in particular monitoring the stability of the practice workforce using data available through the National Workforce Reporting Service.

Appendix papers can be found [HERE](#)

What other groups or committees have considered this item to date?

PCCC – Primary Care Commissioning Committee

Summary and Impact on Inequalities

This is a contractual change that is not expected to impact on service delivery or patient care.

This page is intentionally left blank



Lambeth Together Care Partnership Board

Title	Supporting our residents (cost of living)
Meeting Date	11 July 2024
Author	Tom Barrett, Programme Director, Cost of Living
Lead	Tom Barrett, Programme Director, Cost of Living

This item is for;

<input checked="" type="checkbox"/>	Information	<input type="checkbox"/>	Discussion	<input type="checkbox"/>	Decision	<input type="checkbox"/>	Ratification
-------------------------------------	--------------------	--------------------------	-------------------	--------------------------	-----------------	--------------------------	---------------------

Recommendations;

The Lambeth Together Care Partnership Board is asked to;

1. Note and comment on the council programme

What other groups or committees have considered this item to date?

N/A

Summary and Impact on Inequalities

The council's cost of living response programme is targeted at supporting the borough's most vulnerable residents. A full equalities impact assessment of the 2024/25 programme is available alongside the council decision report [here](#)

This page is intentionally left blank

"

\$

!

\$ % \$ &) + ' () *
*) , - .
\$! & % \$ / \$ 0
1 2
3 4 ! # 5
6 2 0 7 3 * 8)
0 & & 9 & 5 -
) 0 2 : 0

1

*

;

' \$ \$

: <

= +

"

0)

8

<

=
(

.

"

0

'

0 2

>

& &59&#+

0

9?

?



6

0

)

)

:

@

)

)

)

\$

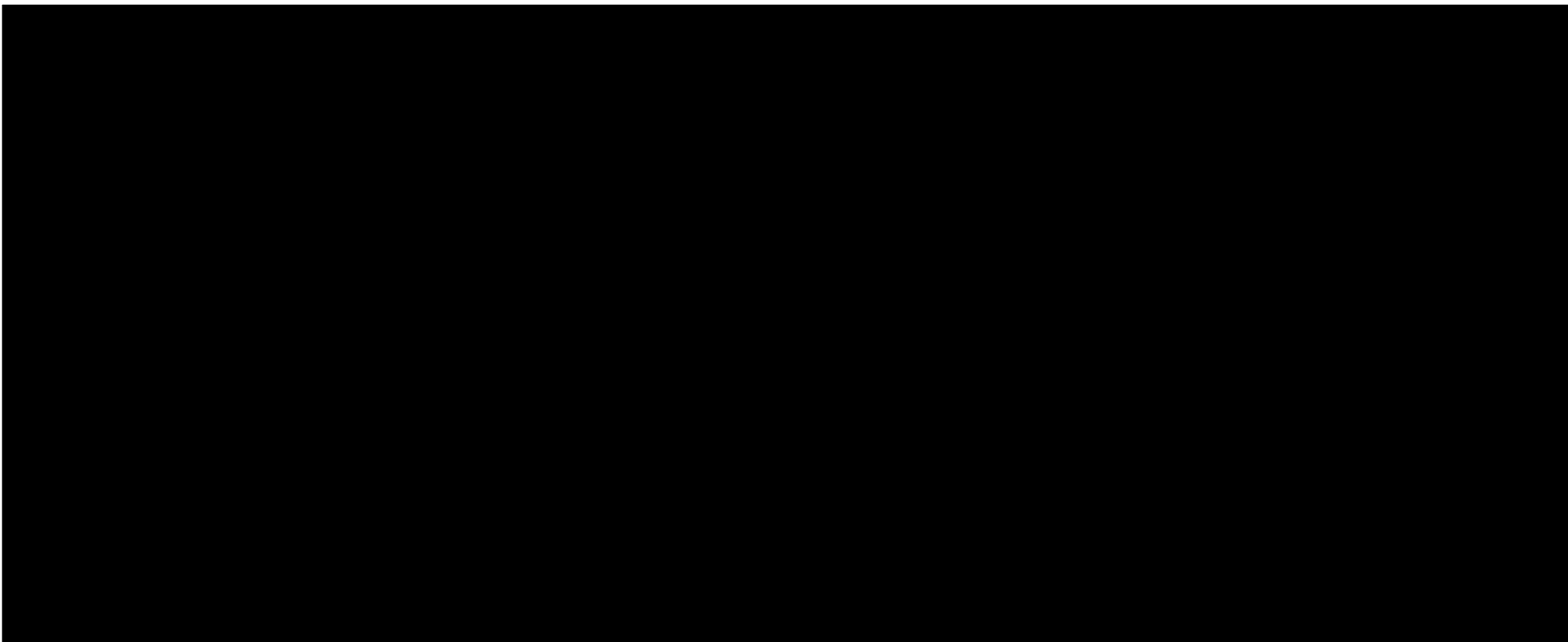
0

)

) &'('

) A "

)



* " \$ +

+ " \$ *

, " \$ -

- " \$ *

" \$ *

* "

B

)

:

0

)

)

2

0

)

)

0& \$ %&#



*

)



*

)

)

? 0: 0 0 0 # 2 0 0 0\$ 2)
0 + \$ = ') 0 # 2 0 0) 0\$ 2)
) 0 + \$ = ') 0 # 2 0 0) 0\$ 2)
) 4

[Redacted]

* + \$, \$, \$ -	- , 1
* + "	- "	, , "	2 "

[Redacted: ! "]

@ \$

[Redacted]

.	.	/	0		
"	* "	, + "	, "	"	, * "

[Redacted: ' (]

()
()

[Redacted: #]

[Redacted: \$ % &]

[Redacted: #)]



B 0

G H) G 7)

= 0 D 0

) :) 0 2) ' & E % # + \$

:) (*) (*)



*

2

0

2

) 0

0

0

2

) 0

0

2

)

7

2

0

0

0

.

)

)

? - ' # \$
) 0 0 -) 0
 \$
 5 ' \$ & \$ / 3 % \$
 + 0 0 : & & 5 9 & # 0 & & # - & / \$
 ()
 =
 G < K * 8 6 2) 8 . 3 * ' % *
 = 4 8 & & 9 & 5

0) 2

? 2) 0

) 8 @)

=) 8 G

-

)

0 2

2)

(

,

& & 5 9 & 7

0 0

() * *

3

)

0 2 +

3

?

0

)

' \$:)

*

)

8

2 - 0 2

?

0 2

: @

:



6

) + , & - &)



Lambeth Together Care Partnership Board

Title	Lambeth Together Primary Care Commissioning Committee update
Meeting Date	11 July 2024
Author	Michelle Elston – Associate Director of Primary & Community Care
Lead	Oge Chesa – Director of Primary Care and Transformation

This item is for;

<input checked="" type="checkbox"/>	Information	<input type="checkbox"/>	Discussion	<input type="checkbox"/>	Decision	<input checked="" type="checkbox"/>	Ratification
-------------------------------------	--------------------	--------------------------	-------------------	--------------------------	-----------------	-------------------------------------	---------------------

Recommendations:

The Lambeth Together Care Partnership Board is asked to:

1. Note the update on discussions held at the Primary Care Commissioning Committee on 22 May 2024
2. Ratify decisions made at the Primary Care Commissioning Committee on 22 May 2024

What other groups or committees have considered this item to date?

Lambeth Together Primary Care Commissioning Committee

Summary and Impact on Inequalities

The Primary Care Commissioning Committee (PCCC) is responsible for facilitating service users with accessible and equitable primary care services in our community. This includes services provided by General Practices, Dentists, Pharmacists, and Eye Care Specialists. The Committee's primary objective is to address and mitigate any healthcare inequalities within the community whilst improving access.

Key Functions:

- (i) **Equity of Provision:** The PCCC ensures that all proposals and items it receives prioritise equitable healthcare provision to the population. It actively works to prevent the creation of unnecessary barriers that hinder people from receiving essential services.
- (ii) **Impact Assessment:** Before approving any major changes to the expected service delivery, the Committee conducts a comprehensive assessment of the proposed changes' impact. This assessment considers the potential effects on

accessibility and ensures that funding is optimally allocated to guarantee inclusive and responsive service access for all.

This update to the Lambeth Together Care Partnership Board is to provide assurance on the delivery of delegated primary care functions, information on and ratification of decisions made at the Primary Care Commissioning Committee on 22 May 2024, and an opportunity to ask further questions and feed into the PCCC business.

! # # \$ % \$ & ' \$ () ! "

! " " # \$

% # # \$ &

% (& # \$

%)) \$ &) # \$

%)) # \$ *) + " ! , & -

* ! " # # \$ % \$ & ' \$

)

" # ! " , + !
' / " 1) ' - *) . " *
! / 0 " 1) ' - *) . " *
*
%2 3 . 2 3 . * ! / 4
* 5
%6 2) 5 ' * (7 &
1 & 7 5 ' * 0
6 3 * 3 ! * 0 8 9 1 * ()
6 *

" # ! " , - + " !
%6 : ;) 5 ') * 5 ((! / <
) &
, ! " " " + * ! "
) ! " " " + ! # " ,
* #)

' ! 0 5 6 ## # \$ *) ' + " \$
! " > *) 6 \$
6 ## " 2 # 4
% *) \$ (*) 6
% * ' " = 5 \$ @
= =) (= & . " = &
= A = A (+ " =
&
6 ## \$ % \$ & ' \$ (# \$ % \$
")

' (*)
%d \$
% * ' " "
% ()
(D &
' * ' " "
+ " = *
8 * ! " - 5 # 8 /
(" " &
4 (" ")
7 (" ")
6 /) B /
7) 3
" (=)) 3 * + " (? C
7
3
2
3
6 / 0 B / 1 8

!, 96 !

8

'

4

)

(

06631

*

)

5

*

(

(

5

5

(

%

+

&

'

(

(

E

<

)

,

=

=

"

%. * ; 6

663

*

*

%

)

)

5

663&

%

4

:

(

(

&

%

)

(

(

(

)

!, 96 "

3;

:"

\$% \$ <

2

6"

/ "

66/

66/

0
' = "
<
&
% F *'" 5 = (5 2 3 . 7 5)
= () & 5) & ()
) ()))
' 4 7 (*) ") 5 ()
* ((4 ())

0
%) (4 5 (4 & ' ((& ' & ((" = " - " \$ < \$ % \$ &) = " # \$ % \$ &)

6

8

(

@

%

*

>

%

#

%

*

#

%

=

%

"

%

#

6

9

"

6 9

'

"

'

6

;

+

5

* ' "

&

6

8

(

@

(

"

<

"

2

(

0 "

2

1

&

%

;

)

(

"

2

&

%

)

)

@

% "

4

%

%

6

8

(

@

-

"

%B

(

(

(

F

5

(

(

%

B

B

0 B B ' 1

5

)

9

@

1

#

#

/

#

"

"

"

3 % A

#

"

.

*

#

)

6

8

(

@

. * #

9

(

5

*

"

2 (0 " 2 1

;

*

" 2 &

%

" 2

()

(

* " "

5

" 2 * .

" 2 2

B

%

"

B

(

" 2

3 / ; " 2 5

"

. 9)

#

)

*

#

)